



**Churchill Place**  
Canary Wharf

Two office units of c.4,000 sq ft each  
available to let

## The Building | Overview

# High five.

Five Churchill Place is an iconic Canary Wharf building offering two units of c.4,000 sq ft each. A unique opportunity in an impressive landmark.



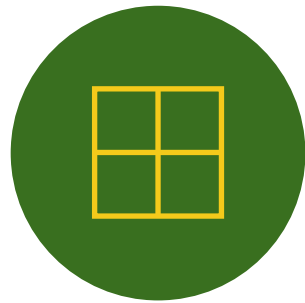


Ground floor reception hall

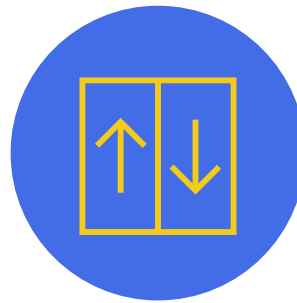
# Setting standards.



**BREEAM  
Rating Excellent**



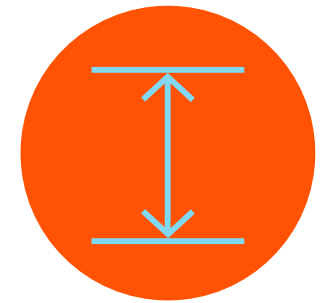
**Full height  
glazing**



**8 x 21 person  
passenger lifts /  
2 goods lifts  
(3,000kg & 1,800kg)**



**3 x 2,000 KVA building  
standby generators and  
1 x 1,000 KVA UPS**



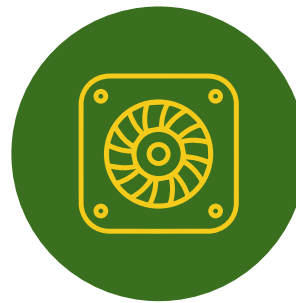
**2.8m floor to ceiling  
height / 200mm (overall)  
raised floor void**



**EPC rating: C (54)**



**Dual power supply  
from 2 different  
substations**



**4-Pipe fan coil  
air-conditioning**



**Dedicated bike  
storage/lockers/  
showers for 10th  
and 11th floors.**



**Excellent access  
to Wood Wharf**

The Building | Views

# Take it all in.



5 Churchill Place | Canary Wharf

**Stunning panoramic views, everywhere you look.**

With the iconic Canary Wharf towers to the west, and the waterside setting of Wood Wharf to the east, you'll never be short of inspiration.



Part 10th floor

Floor to ceiling  
glazing which  
floods the floors  
with natural light.



**Exceptional  
Grade A  
office space.**

Part 11th floor

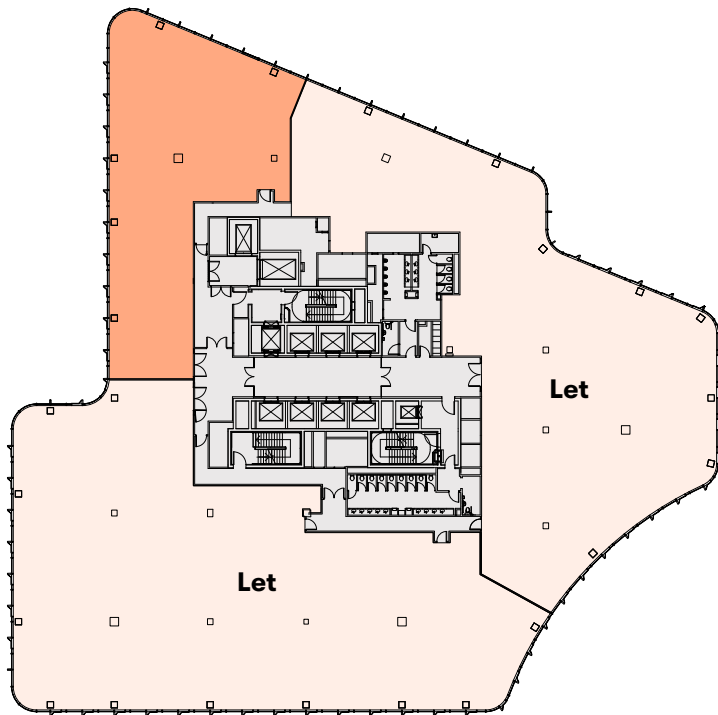
# Elevated working.

Level	Sq ft	Sq m
Part 11th	4,202	390.4
Part 10th*	4,117	382.5
<b>Total</b>	<b>8,319</b>	<b>772.9</b>

\* Available on a Cat A, fitted or managed basis

## Part 11th - Floor Plan

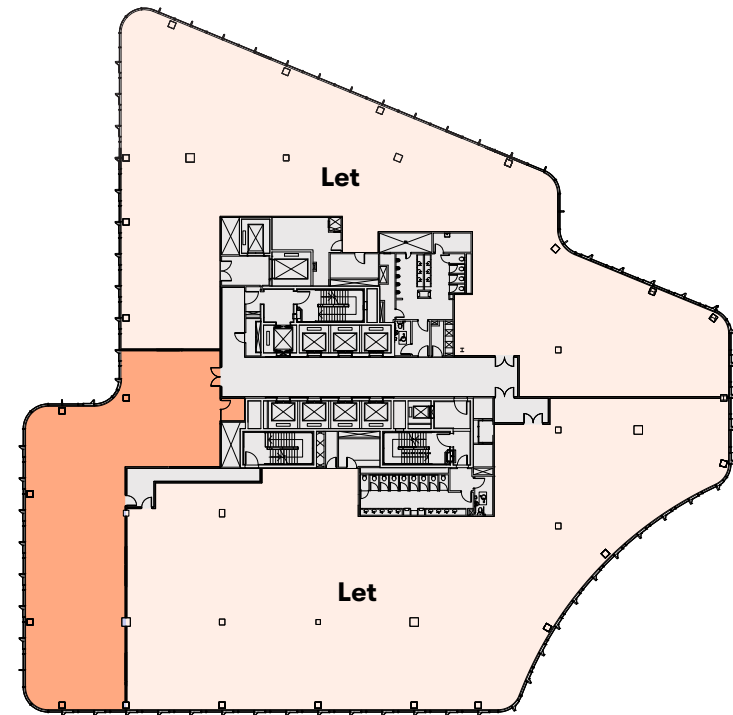
4,202 sq ft (390.4 sq m)



Churchill Place

## Part 10th - Floor Plan

4,117 sq ft (382.5 sq m)



Churchill Place

Plan not to scale,  
for indicative purposes only.





## The Location

# Not nine to five.

**Open spaces and exciting amenities, offer the ideal place to meet.**

Canary Wharf leads the way as an exceptional lifestyle and cultural destination, whether it's an early morning coffee, street food lunch, or evening catch up - we've got it covered. Oh, and there's plenty of green space too!



2



3

- 1 640 East
- 2 Sun Pavilion By Morag Myerscough
- 3 Jubilee Park

Relaxing open spaces are complemented by art installations and events around the estate.

## The Location

# Take advantage of an unrivalled amenity and retail offering.

Completing in 2025, Wood Wharf will provide 350,000 sq ft of retail and leisure space, with a top quality dining offer so you're spoilt for choice at lunchtime.

Emilia's  
CRAFTED PASTA



Patty&Bun

DISHOOM

mallow

amazon fresh



- 1 Wood Wharf
- 2 The Alchemist
- 3 Crossrail Place
- 4 Jubilee Park



5 Churchill Place | Canary Wharf



Additionally, Crossrail Place features a number of exciting F&B offerings, along with gyms and an Everyman cinema.

STICKS N SUSHI

FRANCO MANCA  
SOURDOUGH PIZZA

EVERYMAN

OLE & STEEN  
LAGAGEHUSET

The Breakfast Club  
locally world famous

ISLAND POKÉ

# The Location | Amenities

## Food & Drink

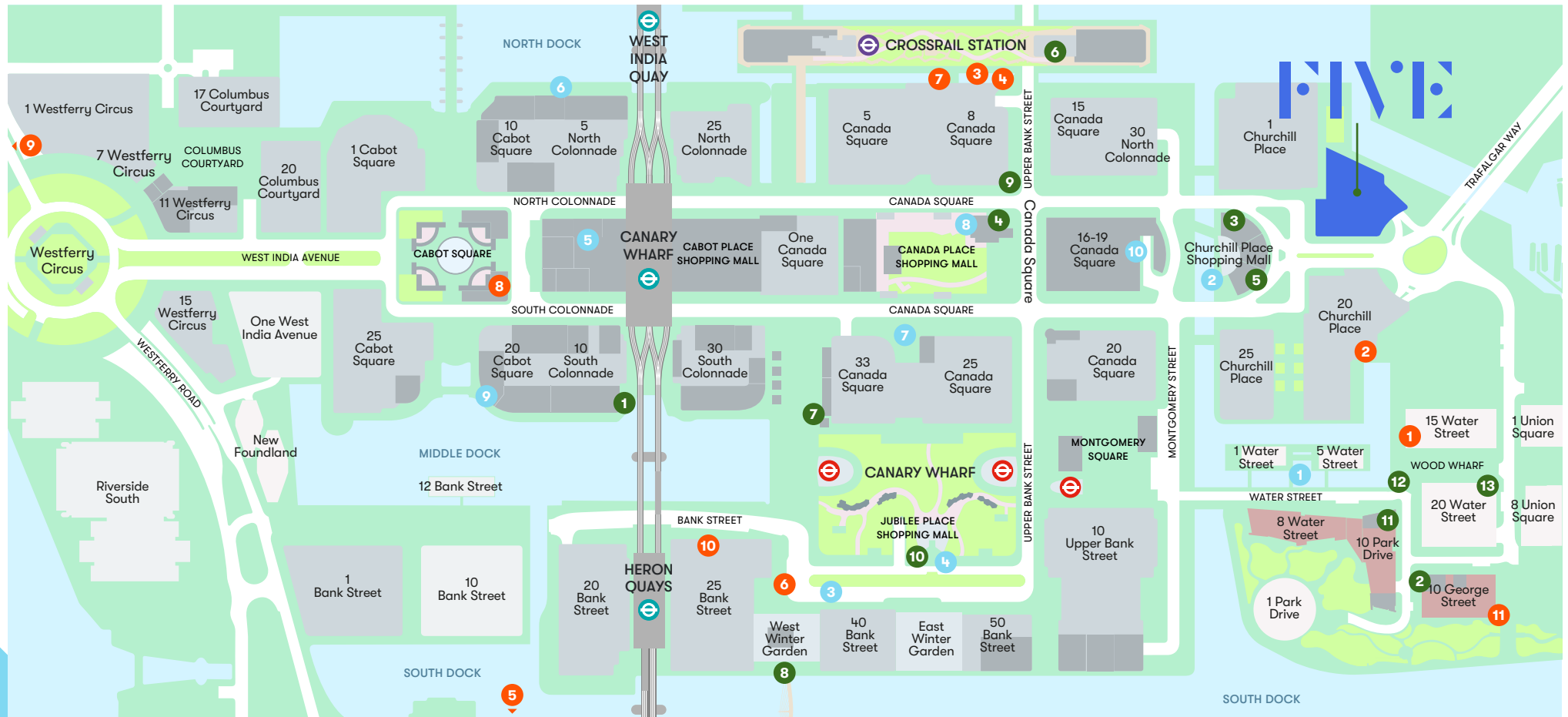
- 1 Six by Nico
- 2 Mercato Metropolitan
- 3 Brewdog
- 4 The Ivy
- 5 Rocket
- 6 Ole & Steen
- 7 The Alchemist
- 8 Obica
- 9 640 East
- 10 Starbucks
- 11 Grind
- 12 The London Project
- 13 Patty & Bun

## Retail

- 1 Amazon Fresh
- 2 Lap Bikes
- 3 Reiss
- 4 Lululemon
- 5 Peloton
- 6 Zara
- 7 Kate Spade
- 8 The Kooples
- 9 Humble Grape
- 10 Waitrose

## Gyms & Leisure

- 1 Third Space
- 2 GoBoat
- 3 Sweat by BXR
- 4 Everyman Cinema
- 5 Nuffield Health
- 6 Awakn
- 7 Barrys
- 8 Therapie Clinic
- 9 Virgin Active
- 10 Floppa
- 11 Ultimate Performance



The Location | Connectivity

# Take five.

## Transport connections on your doorstep.

Just a five minute walk to Crossrail Place, Five Churchill Place is well connected – providing easy access to the transport network, including the new Elizabeth line.



5 Churchill Place | Canary Wharf



**Bank**



**Crossrail Place**



**Stratford**



**Bond Street**



**London City Airport**



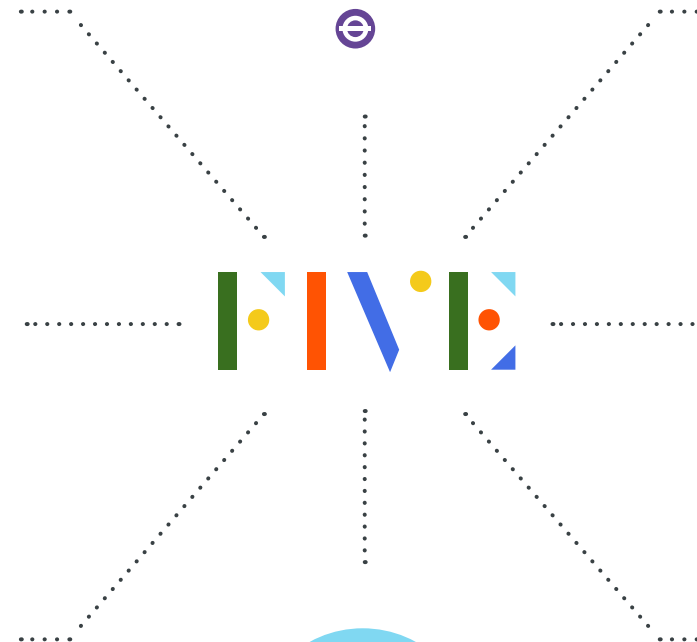
**Heathrow Airport**



**Waterloo**



**London Bridge**



Journey times taken from the building.  
All journeys factor in walk times.

# Further information.

## Viewings

Strictly through joint sole letting agents:



### Marina Campbell

07814 067 404

020 3307 4149

marina.campbell@knightfrank.com

### Toby Pritchard-Davies

07468 724 284

020 7861 5212

toby.pritchard-davies@knightfrank.com

## Terms

Upon application



**GRYPHON**

PROPERTY PARTNERS

### Jeremy Trice

07798 636 599

020 3440 9802

jeremy.trice@gryphonpropertypartners.com

[fivechurchillplace.com](https://www.fivechurchillplace.com)

IMPORTANT NOTICE: Gryphon Property Partners and Knight Frank give notice to anyone who may read these particulars as follows: 1. These particulars are prepared for the guidance only of prospective purchasers. They are intended to give a fair overall description of the property but are not intended to constitute part of an offer or contract. 2. Any information contained herein (whether in the text, plans or photographs) is given in good faith but should not be relied upon as being a statement or representation of fact. 3. Nothing in these particulars shall be deemed to be a statement that the property is in good condition or otherwise nor that any services or facilities are in good working order. 4. The photographs appearing in this brochure show only certain parts and aspects of the property at the time when the photographs were taken. Certain aspects may have changed since the photographs were taken and it should not be assumed that the property remains precisely as displayed in the photographs. Furthermore no assumptions should be made in respect of parts of the property which are not shown in the photographs. 5. Any areas, measurements or distances referred to herein are approximate only. 6. Where there is reference in these particulars to the fact that alterations have been carried out or that a particular use is made of any part of the property this is not intended to be a statement that any necessary planning, building regulations or other consents have been obtained and these matters must be verified by any intending purchaser. 7. Descriptions of a property are inevitably subjective and the descriptions contained herein are used in good faith as an opinion and not by way of statement of fact. October 2023.

Designed & produced by Cre8te - 020 3468 5760 - cre8te.london